

The Dragonfly

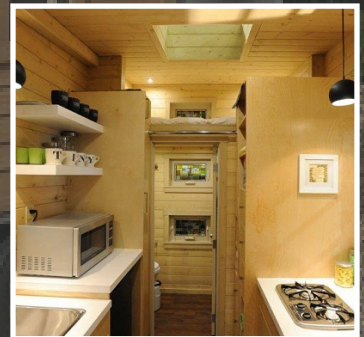


FEATURES

- 160 sq. ft
- contemporary design
- vaulted ceilings
- multiple exterior finishes
- loft area
- two hinged decks
- rolling stair/storage unit
- retractable kitchen table
- pull out sofa bed
- built in shelves
- wood interior
- off the grid option

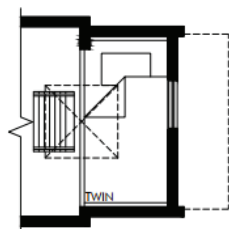
SPECS

- 2x4 exterior wall construction with ZIP system sheathing
- closed cell spray foam in walls, ceilings and floor
- patented insulated floor system
- Pella windows and doors
- Kohler plumbing products
- Sea-Gull LED lighting
- Whirlpool appliances
- Merrilat cabins
- drywall walls with wood accents
- solid surface countertops

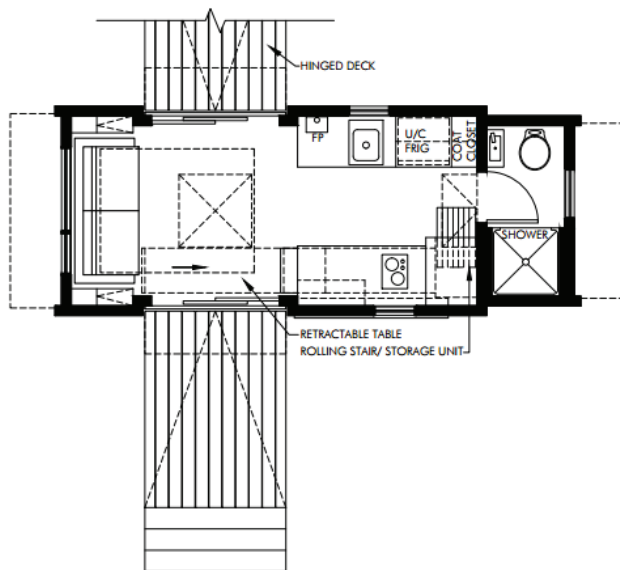


The Dragonfly

20' Model

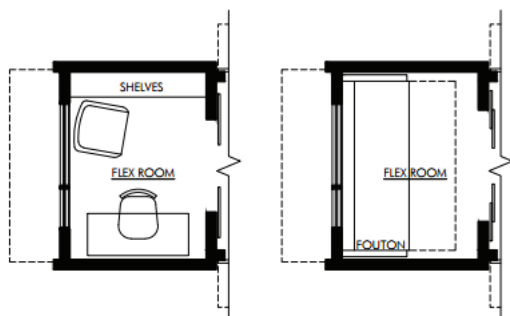


LOFT FLOOR PLAN
DRAGONFLY-20

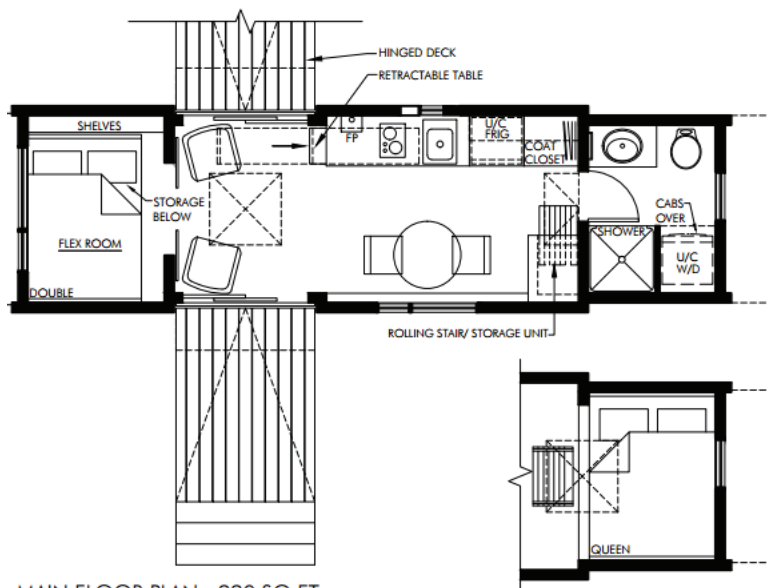


MAIN FLOOR PLAN - 159 SQ FT
DRAGONFLY-20

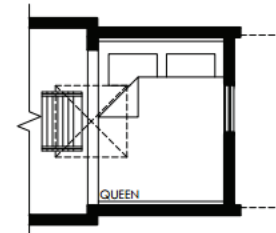
28' Model



FLEX ROOM OPTIONS
DRAGONFLY-28



MAIN FLOOR PLAN - 220 SQ FT
DRAGONFLY-28



LOFT FLOOR PLAN
DRAGONFLY-28